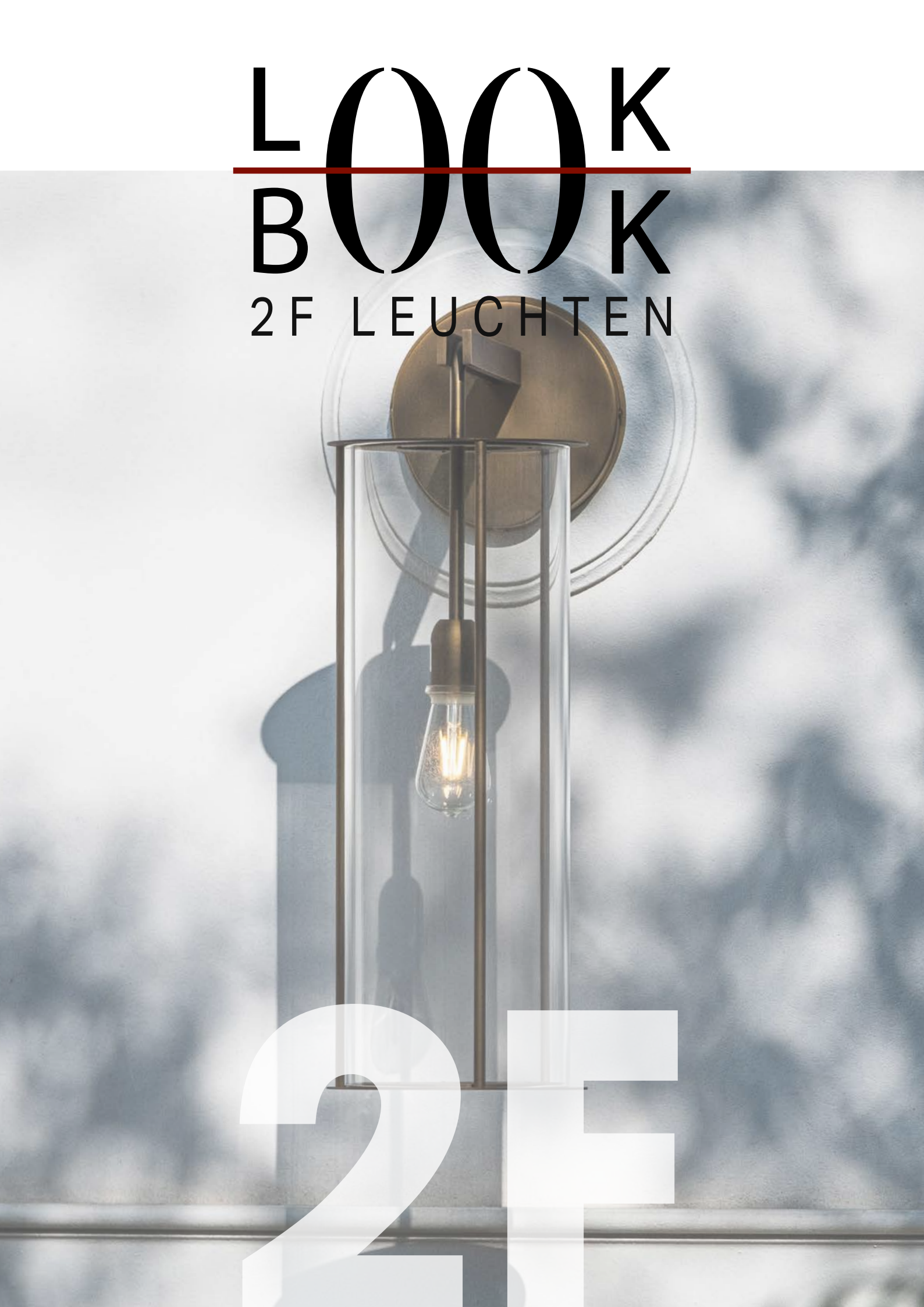


LOOK

BOOK

2F LEUCHTEN

2F





KEEP PROVEN ALIVE TRADITION MATTERS

Our home is the romantic Lammertal valley, in the heart of the Salzburg mountains. The family has always formed the spine of our business, giving us the necessary confidence and motivation to face past, present and future commercial challenges. All this in harmony with the traditional values to which we diligently and unerringly adhere.

As a family-run business we have developed a sophisticated corporate culture and a strong sense of responsibility for our role in the region. The traditions we hold dear are integral to our manufacturing base in Abtenau near Salzburg. After all, the more we create and generate in the region, the more the product is valued and appreciated.

2F HISTORY

2F-Leuchten is a family-owned and family-run company founded in 1972, and has been under the ownership of Maria and Hans Buchegger since 2002. The factory originally crafted traditional lamps from wood and wrought iron. Today, the company mainly manufactures bespoke lights and illumination solutions for hotels and shops. A workforce of over 80 employees allows us to guarantee our domestic, foreign and international clients a short delivery times and high flexibility. The majority of the personnel are local people, and our team offers a comprehensive range of skills. We accommodate 15 trades and crafts under one roof, including metalworkers, blacksmiths, painters, carpenters, tailors, electricians, machine builders, lighting planners and designers. These individual specialists all work together to produce something far greater than the sum of its parts. Every project is special, and we help every customer and architect to achieve something absolutely unique.

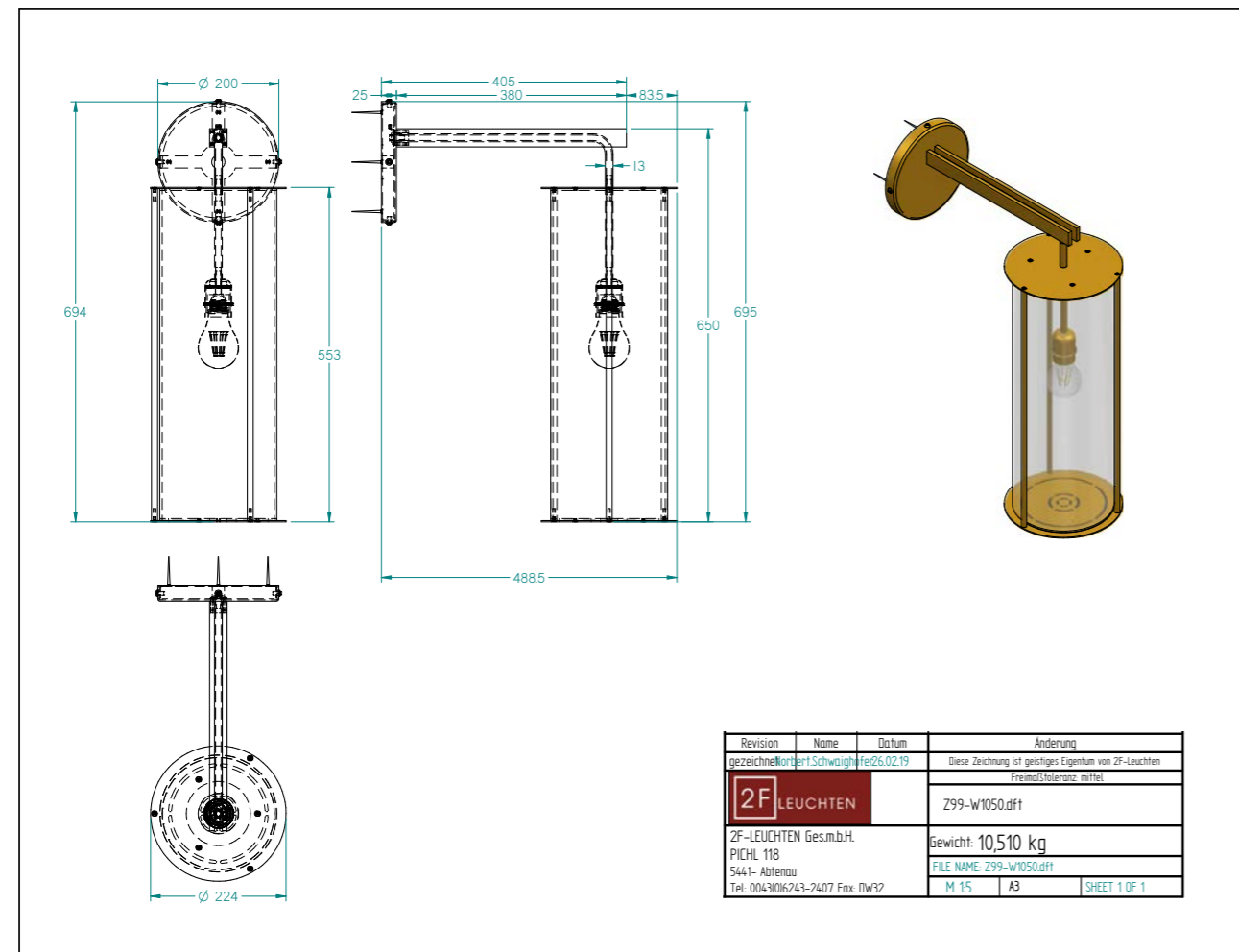
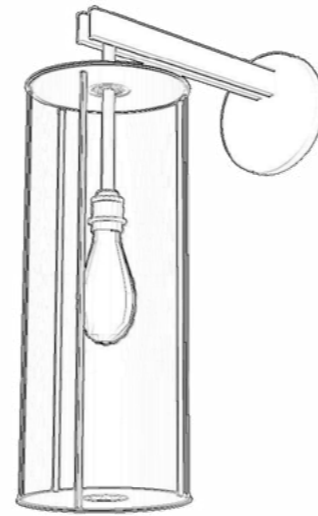
2F-Leuchten is a business that reinvents itself again and again. Every single item we have ever manufactured was an opportunity seized to rethink the journey ahead, and to craft lighting solutions in tune with the times. We are prepared to navigate unexplored territory and carve out new paths in every phase of creation and construction. We grow with every task, and every challenge is an opportunity to grow.



MAKING BRIGHT IDEAS SHINE

All our customers contribute to the creation and design of their own 'worlds of light'. Sometimes this process takes weeks – sometimes months. The 2F team is instinctively conscious of the need to pay attention to the sensibilities of our clients, to their tastes, preferences, dreams and design expectations – to develop a solution that meets every technical, aesthetic and emotional requirement – to make your bright ideas shine! Aesthetic - attractive - functional.

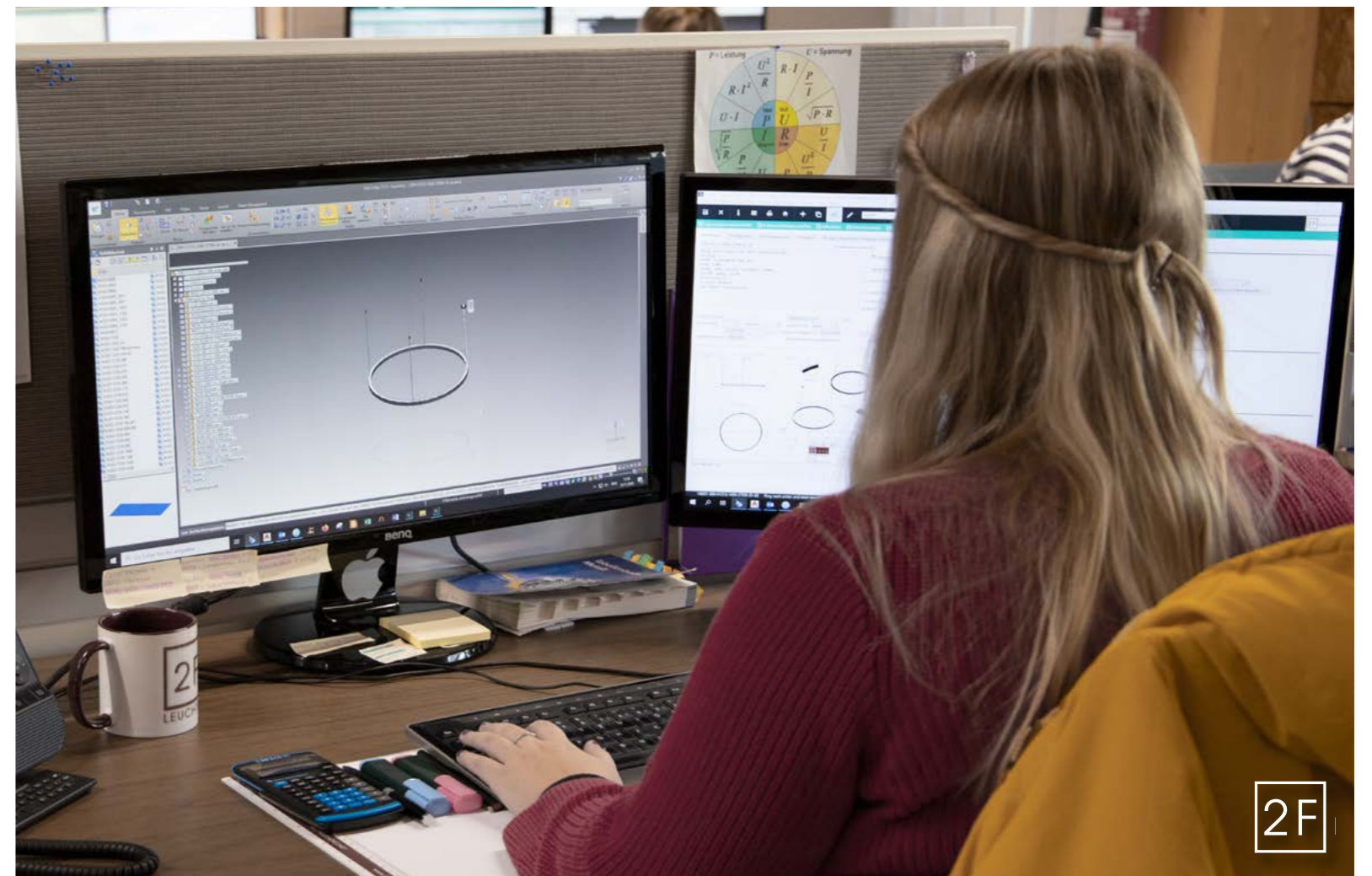
In the world of lighting, we set no limits on the creative freedoms granted to architects and designers - or to the light infrastructure we produce. The worldwide unique 2F manufactory is combining traditional arts and crafts with benefits of modern industrial technology, that enable us to implement almost every draft and design fantasy.





DESIGN

We support you right from the drafting phase with 3D CAD drawing, that enables us to render your digital visualization. From early on, our construction designers create drafts which are feasible and this 2D and 3D models are available for your further planning. This guarantees a seamless process – from the initial concept, on to product development, and through to production.



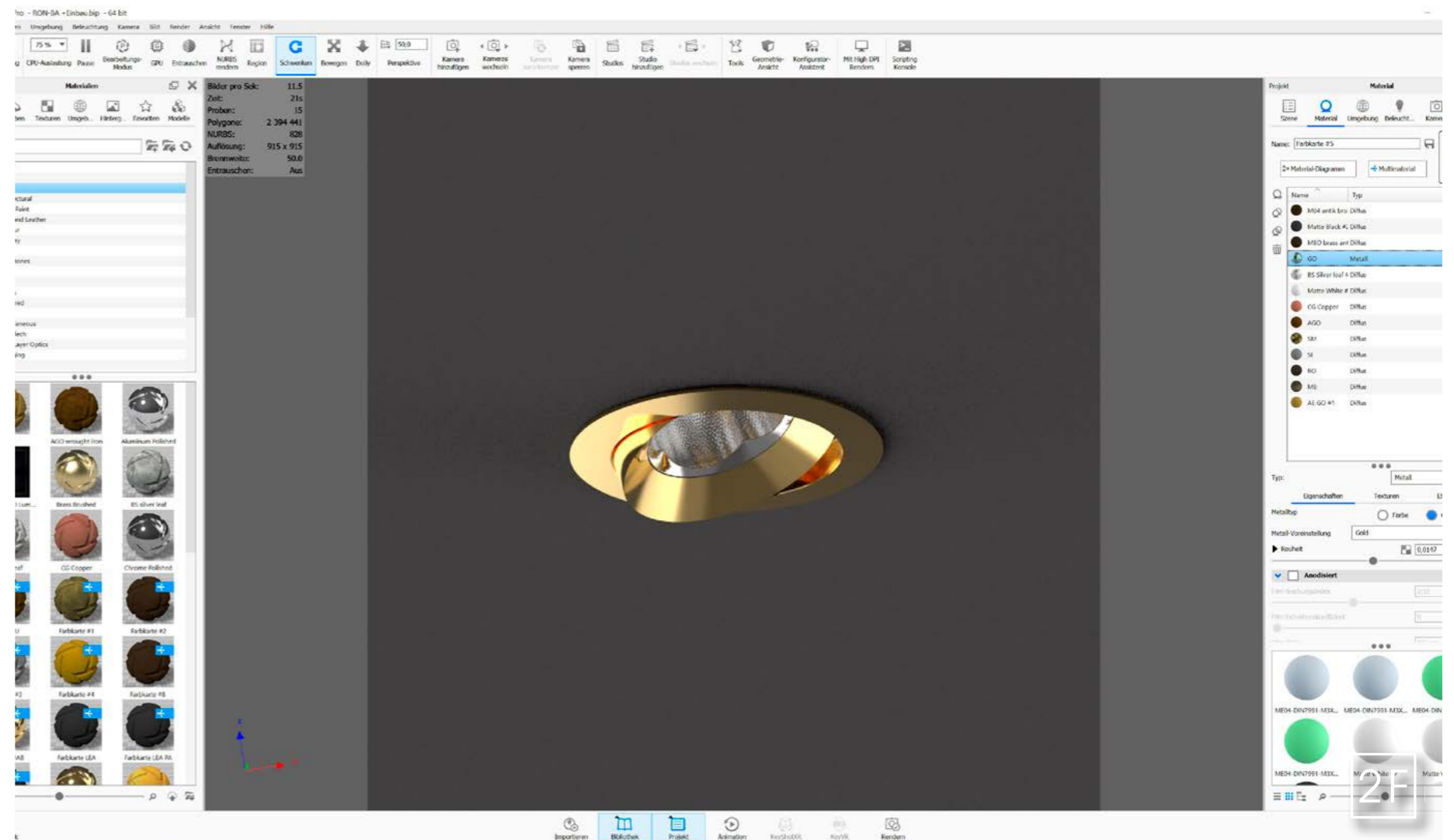
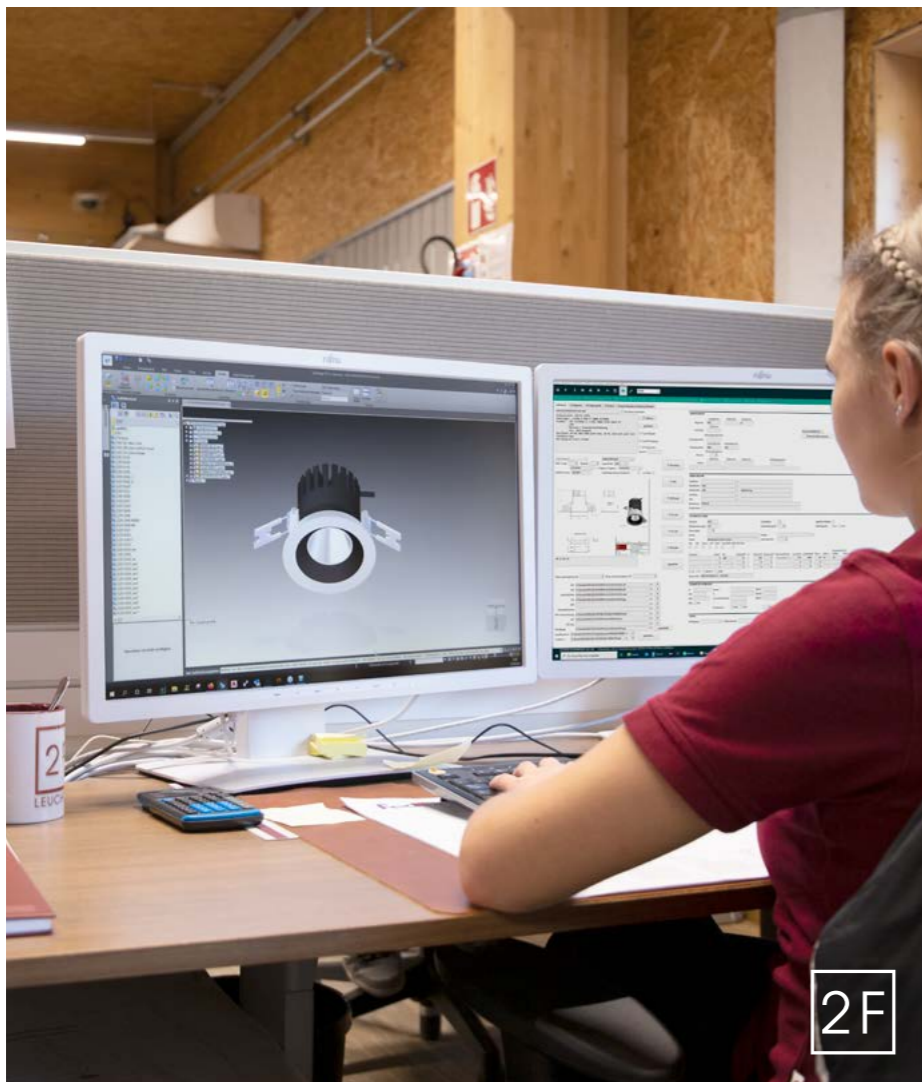


PLANNING

Reliable light plans, well-thought-through from an early stage, are about far more than the choice of the right lighting. Indeed, today's expectations are far greater: Style, presence, individuality, versatility, durability, energy efficiency and innovative technology all play decisive roles.

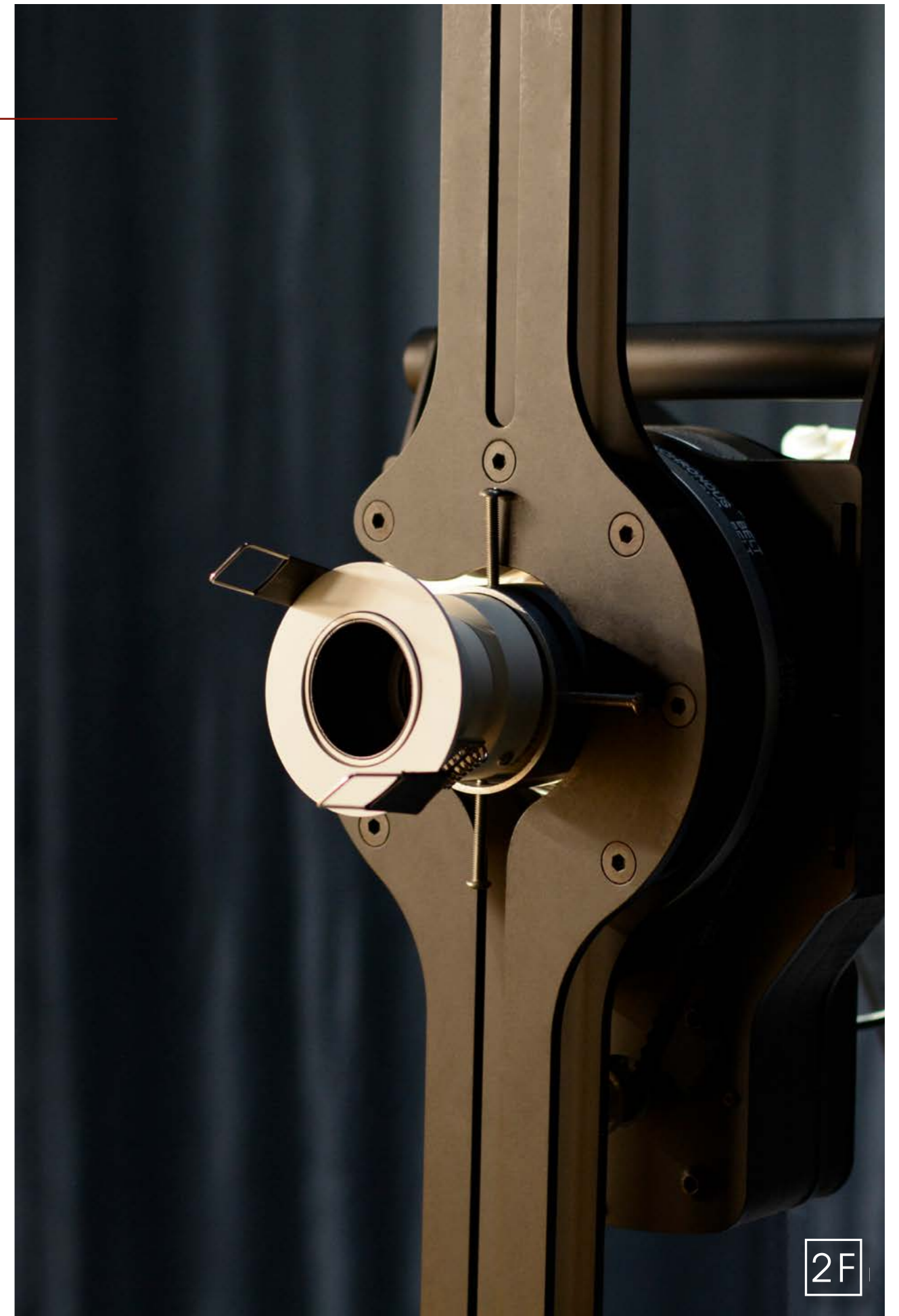
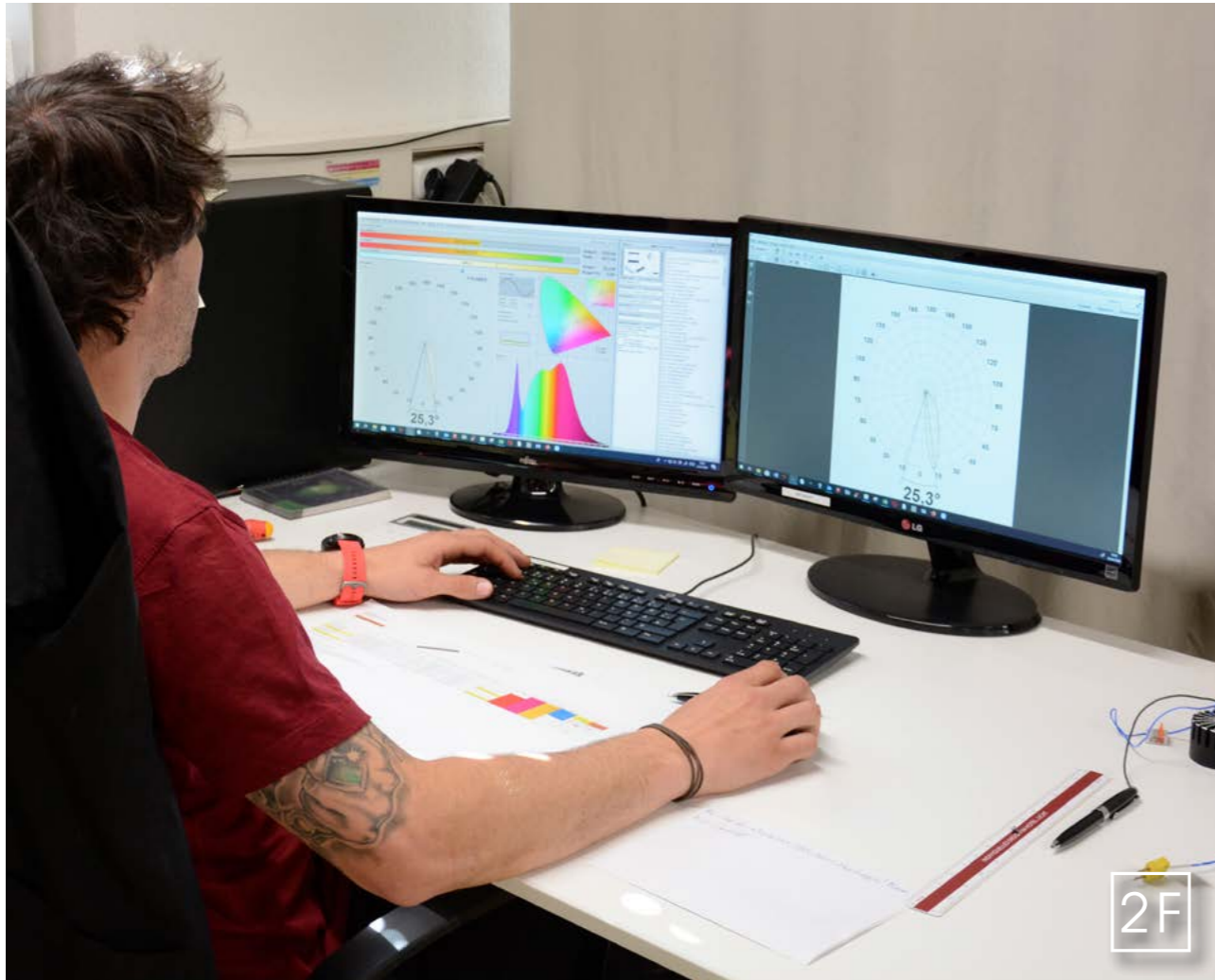
The vast variety of lighting scenarios demands an analytical approach to solution optimization for every working environment, basic lighting, background illumination and light pooling.

Our ambitious, enthusiastic and highly experienced team looks forward to helping you optimise your bright ideas.



LIGHT LAB

Product development is the phase in which we define the characteristics of each lighting solution. The in-house light lab enables us to monitor compliance with predefined specifications on an ongoing basis, and to adapt products to project requirements without complications. A 2-axis goniometer is used to measure the entire 3D light distribution from a source and provide a comprehensive range of photometric LTD and IES simulation files.





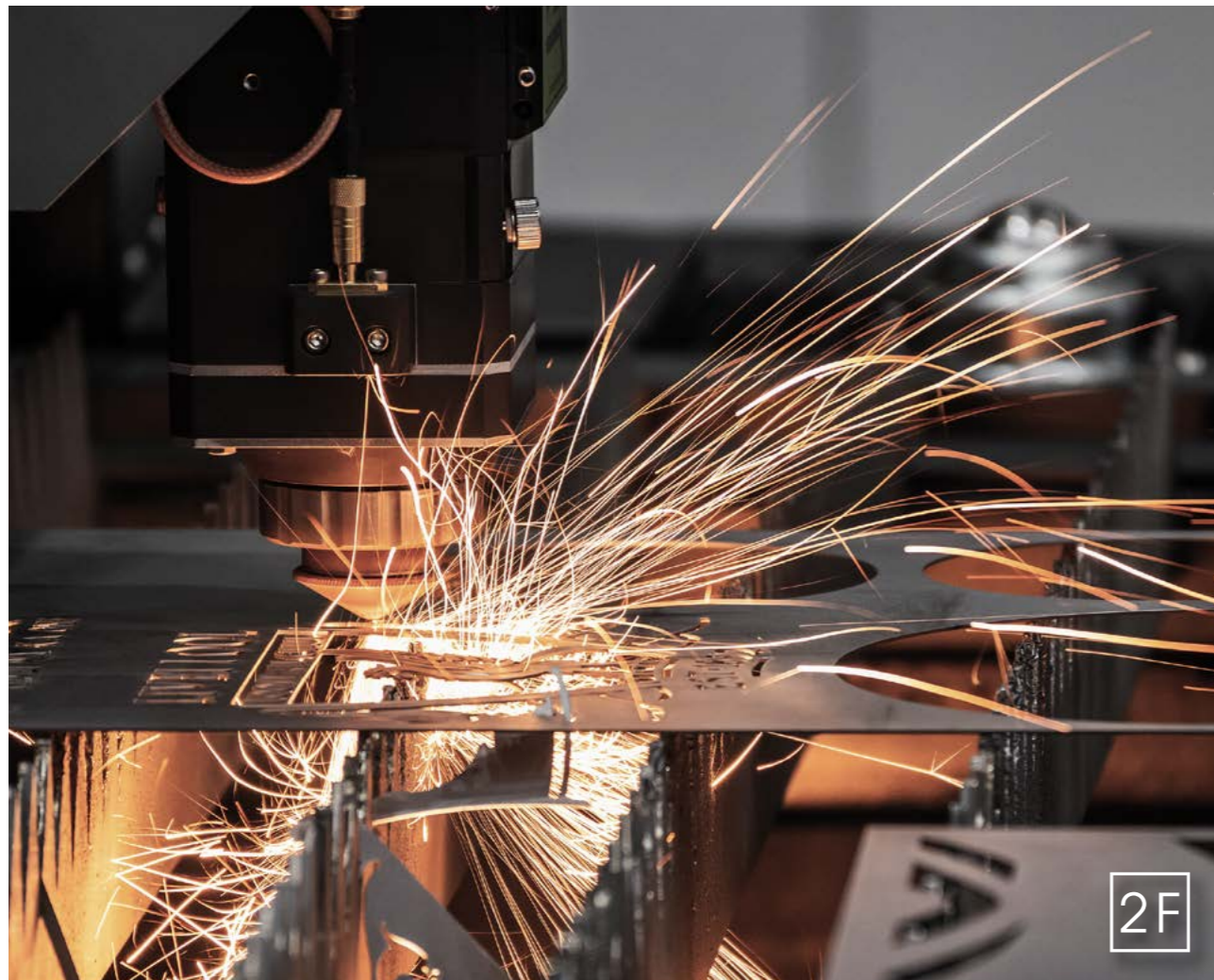
THE VISUAL PERCEPTION OF LIGHT

Lighting is about far more than differences in brightness, and is increasingly an issue of visual perception. LED lighting is very dense, so it's particularly important to avoid light scattering. With LED illumination the light needs to be distributed precisely and be delivered to clearly-defined areas. In our latest series product developments, we are clearly focusing on the innovative and patented reflector and LED lens technologies of the Bartenbach company. We believe a modern marriage of timeless elegance and modern functionality best serves customer-specific requirements as regards the objective demands of practicality, efficiency and superior performance, and the aesthetic emotionality of visual convenience, comfort and beam dispersion.



METAL

Once the plans have been completed it's time for the production department to begin. Our metal worker masters the traditional arts of forging, soldering, press-cutting, bending and welding and is responsible for creating the lamp's bodywork and the wire frame for the lamp shades.





2F

2

WOOD

Wood is a living material we are delighted to use, but one which requires plenty of patience and experience when being processed. All known soft and hardwoods are processed using planing, milling and turning lathes. The production technique we select depends upon the size and design the work piece.



2F

FINISH

In surface production we give the product that desired finish. Forms of patination as well as gold and silver leaf plating are just a few options. Individuality is particularly important in this step. Often a completely new surface is created in collaboration with the customer.





RESTORATION

Antique lights are often priceless items. Their restoration is an art that encompasses a multitude of skills, including careful cleaning, the replacement of leads, wiring and light-bulb sockets, glass and crystal elements; cast reproduction, and even precisely regilding items to the original color and shade.

We are happy to restore large chandeliers within the framework of your project and, of course, we cooperate closely with authorities on the conservation of historical artefacts.



SHADE PRODUCTION

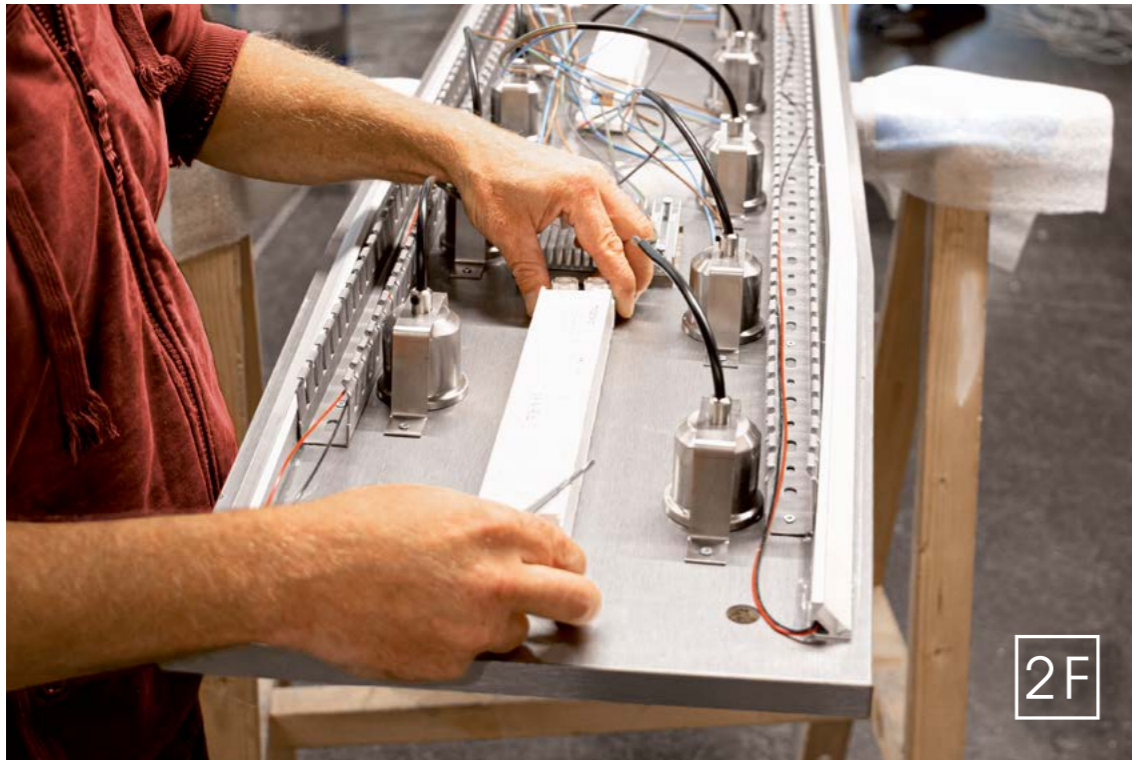
A shade transforms a light into something cosy and warm. Carefully selected materials are precision cut via CNC and are then added to the wire frames produces in-house. Our team masters coding, wrapping or pleating as traditional sewing techniques for light sail constructions.



GLASS

Glass is often a significant part of lighting sculptures. We have mastered the use of crystals as well as the different manufacturing techniques of handmade glass.





MANUFACTURING

Combining traditional materials with modern technologies requires on-the-ground expertise when it comes to the production and installation of our lighting. Nothing is of greater value to us than the flexibility, skill and know-how of our employees. Masterpieces of light art are produced here with great care and attention to detail, and in adherence with all technical specifications.



QUALITY INSPECTION

A 100% test with a Luminaire Testing Device LPE (1000V test voltage), barcode registration and a specific serial number for every single product guarantee the technical safety of each item. Quality Assurance is also pursued at 2F by means of intensive cooperation with independent test institutes.





INSTALLATION

If desired, we're always delighted to take over responsibility for the on-site installation of your solution. Our assembly technicians have a vast wealth of experience in dealing with highly-sensitive and illuminating works of art, and their expertise here is completely state-of-the-art.

Our specialists can't wait to help.



REFERENCES

2F LEUCHTEN

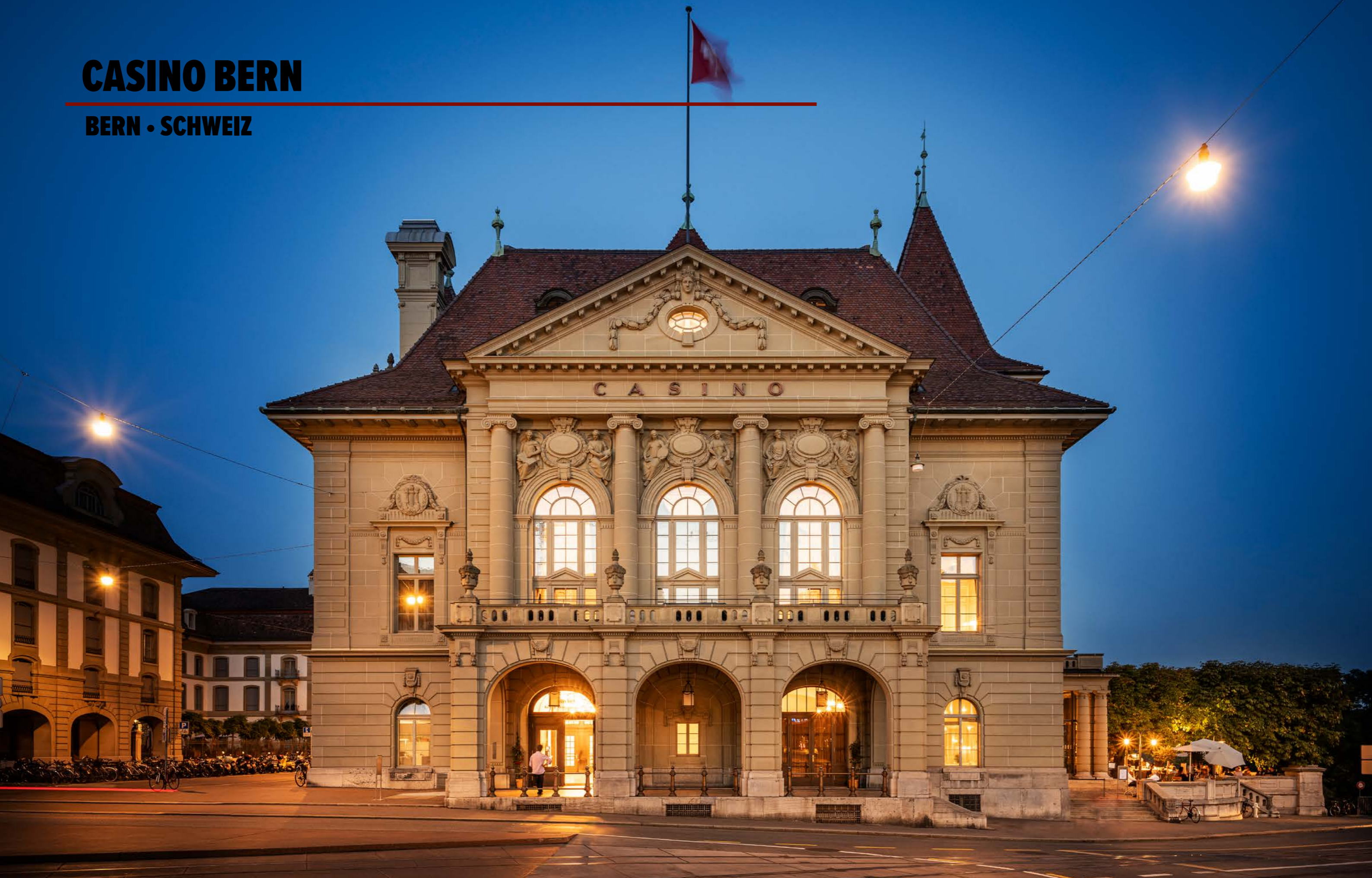
Each realized project, tells his own story. Discover how we overcame our customers' challenges and achieved impressive results.

References are the best proof of our commitment for quality and excellence. They show that we are keeping our promises to serve our customers and partners.



CASINO BERN

BERN • SCHWEIZ



CASINO BERN

BERN • SCHWEIZ

PUBLIC

The Casino Bern has been the cultural and social meeting point in the heart of Bern since its opening in 1909. The late baroque, classicist building was restored and reopened in September 2019. The Atelier Zürich was responsible for the architecture and design. The total value of the contract was 85,000 CHF.



KONZERTHALLE

ANDERMATT • SCHWEIZ

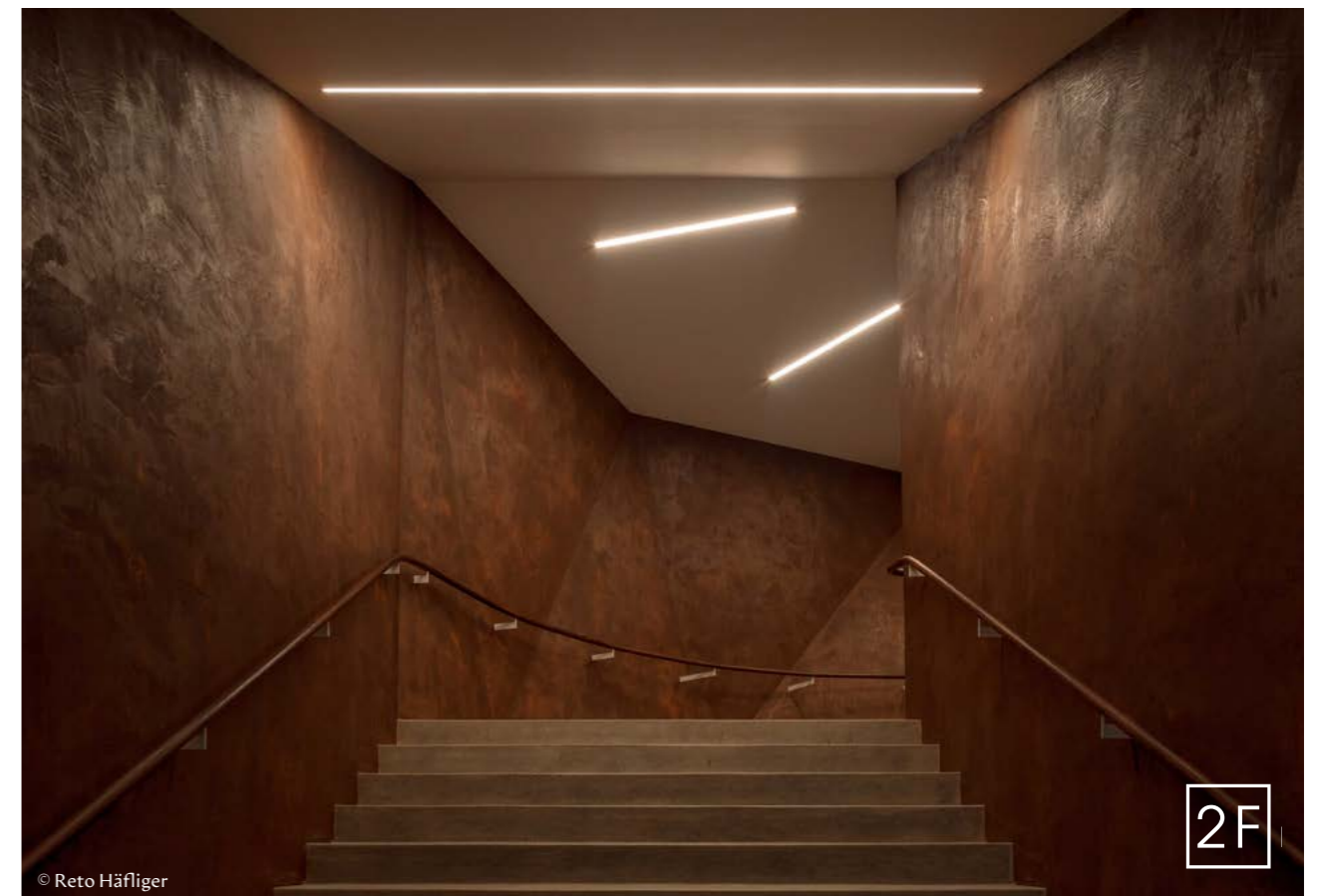
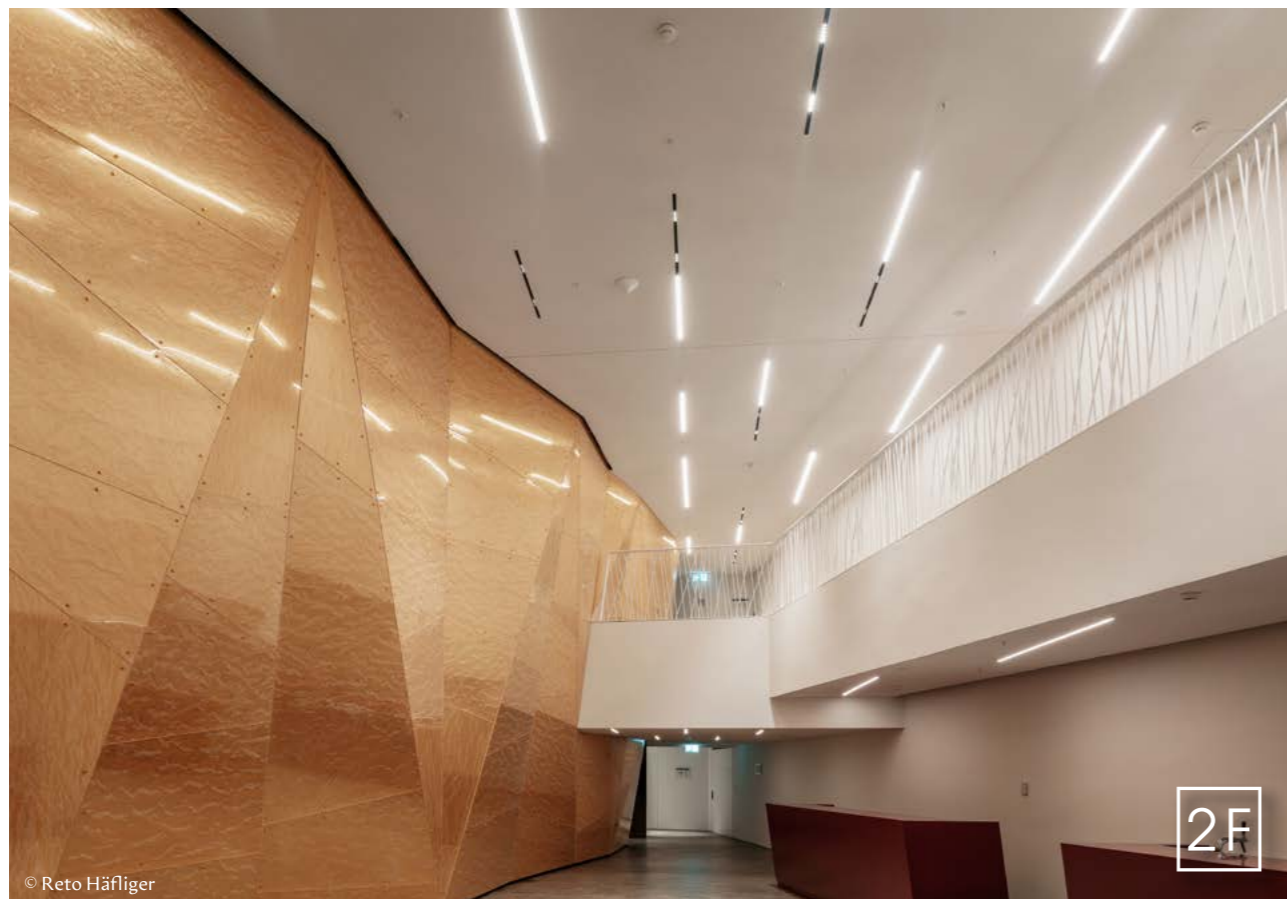
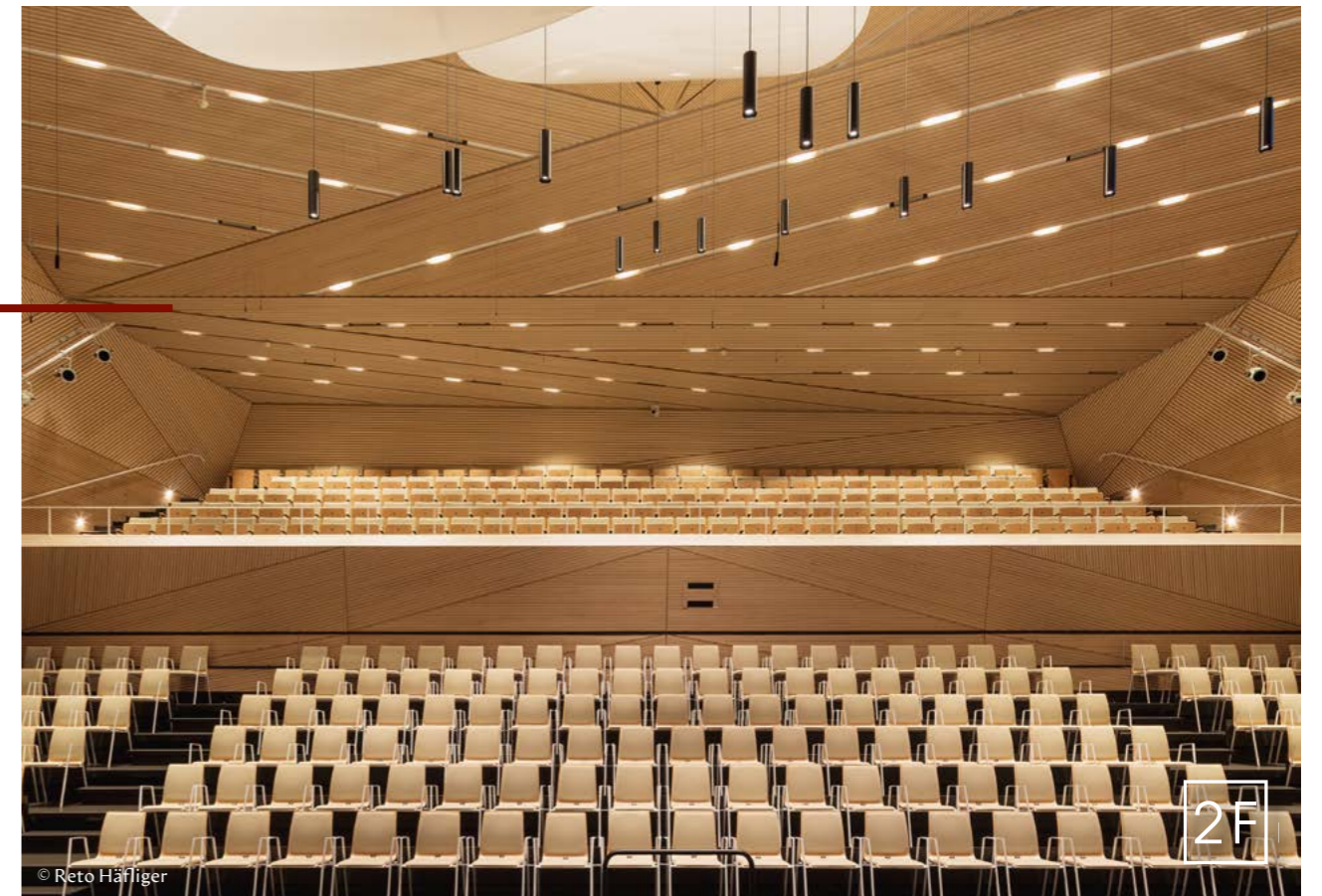


KONZERTHALLE

ANDERMATT • SCHWEIZ

PUBLIC

The Andermatt Concert Hall was inaugurated in 2019. It is the highest-located concert hall in Switzerland. 2F took on the delivery and installation of the technical lighting for this unique cultural building. The contract volume amounted to 300.000 CHF.



PDAG

WINDISCH • SCHWEIZ

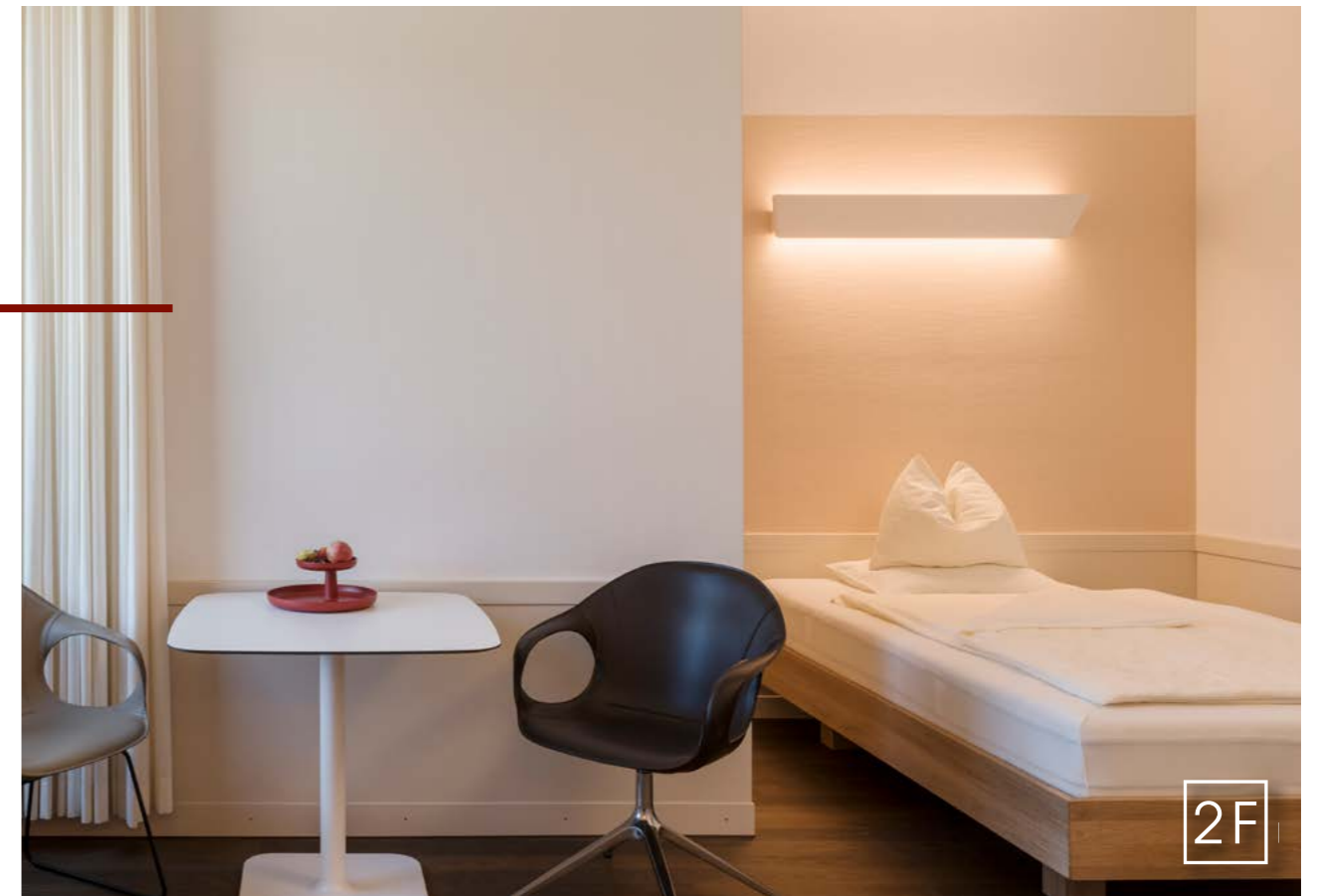


PDAG

WINDISCH • SCHWEIZ

PUBLIC

The PDAG in Aargau is a public institution dedicated to the treatment of individuals with mental health disorders. Lighting, in this particular case, plays a crucial role here in ensuring the work for staff and the well-being experience of patients. The contract volume amounted to € 850.000 in 2019.



NECC - NEW EXHIBITION & CONVENTION CENTRE

BAHRAIN • BAHRAIN



NECC - NEW EXHIBITION & CONVENTION CENTRE

BAHRAIN • BAHRAIN

PUBLIC

The NECC is the largest exhibition and event center in the Arab world. Covering an area of 150,000 square meters, it hosts a wide variety of trade shows and events in the region. 2F developed a lighting concept for the facade, which includes three integrated LED screens, each measuring 26x10 meters. The entire system is controlled through Casambi, making it highly flexible in terms of programming and control. The Ministry of Tourism in Bahrain was the client, and the architecture was handled by Tilke and Partners in Aachen. With a contract value of 5 million euros, the project was successfully completed in 2023.



NESSLERHOF - GROSSARL

GROSSARL • ÖSTERREICH

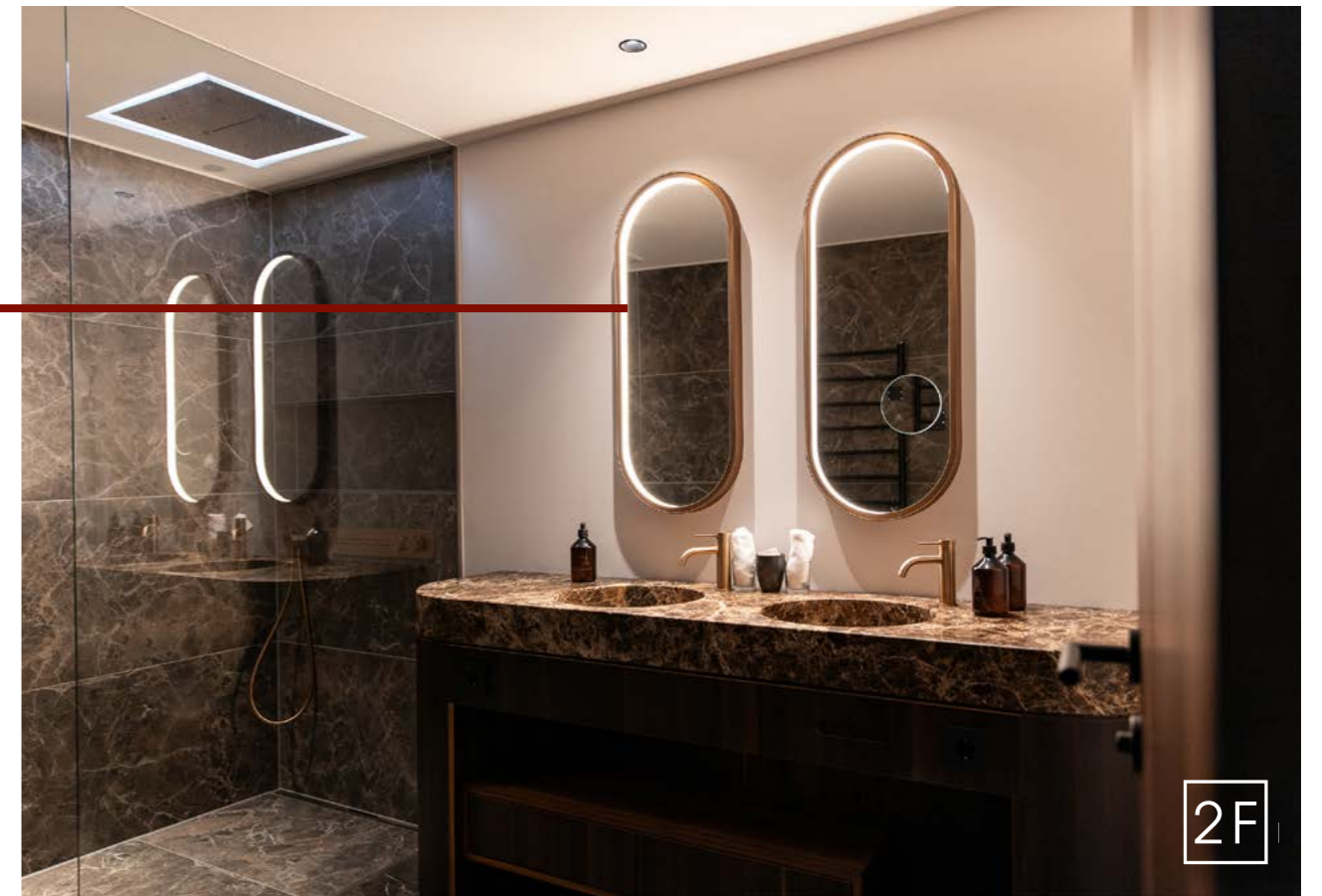


NESSLERHOF - GROSSARL

GROSSARL • ÖSTERREICH

HOSPITALITY

The Nesslerhof Hotel in the picturesque Großarl impressively combines alpine charm with modern design. Our custom lighting solutions perfectly highlight the architecture of the building, creating a warm and inviting atmosphere. Through careful selection and installation of our lights, every area of the hotel is optimally illuminated, whether in the rooms, restaurants, or wellness areas. With a contract volume of 200,000 euros and completion in 2023, we are proud of this exceptional project that harmonizes the beauty of the region with modern design.



BÜRGENSTOCK RESORT LAKE LUCERNE

OBBÜRGEN • SCHWEIZ



BÜRGENSTOCK RESORT LAKE LUCERNE

OBBÜRGEN • SCHWEIZ

HOSPITALITY

The Bürgenstock Resort is located in the heart of Central Switzerland, perched on a spectacular mountain ridge overlooking Lake Lucerne. Famous personalities like Charlie Chaplin, Sophia Loren, and Audrey Hepburn have been guests in this hotel resort. In 2017, two renovated and two newly built hotels were opened. The hotel complex is owned by Katara Hospitality. 2F had the privilege of supplying a significant portion of the decorative and technical lighting fixtures. The contract volume amounted to 2,1 million CHF.



ALMANAC

BARCELONA • SPANIEN

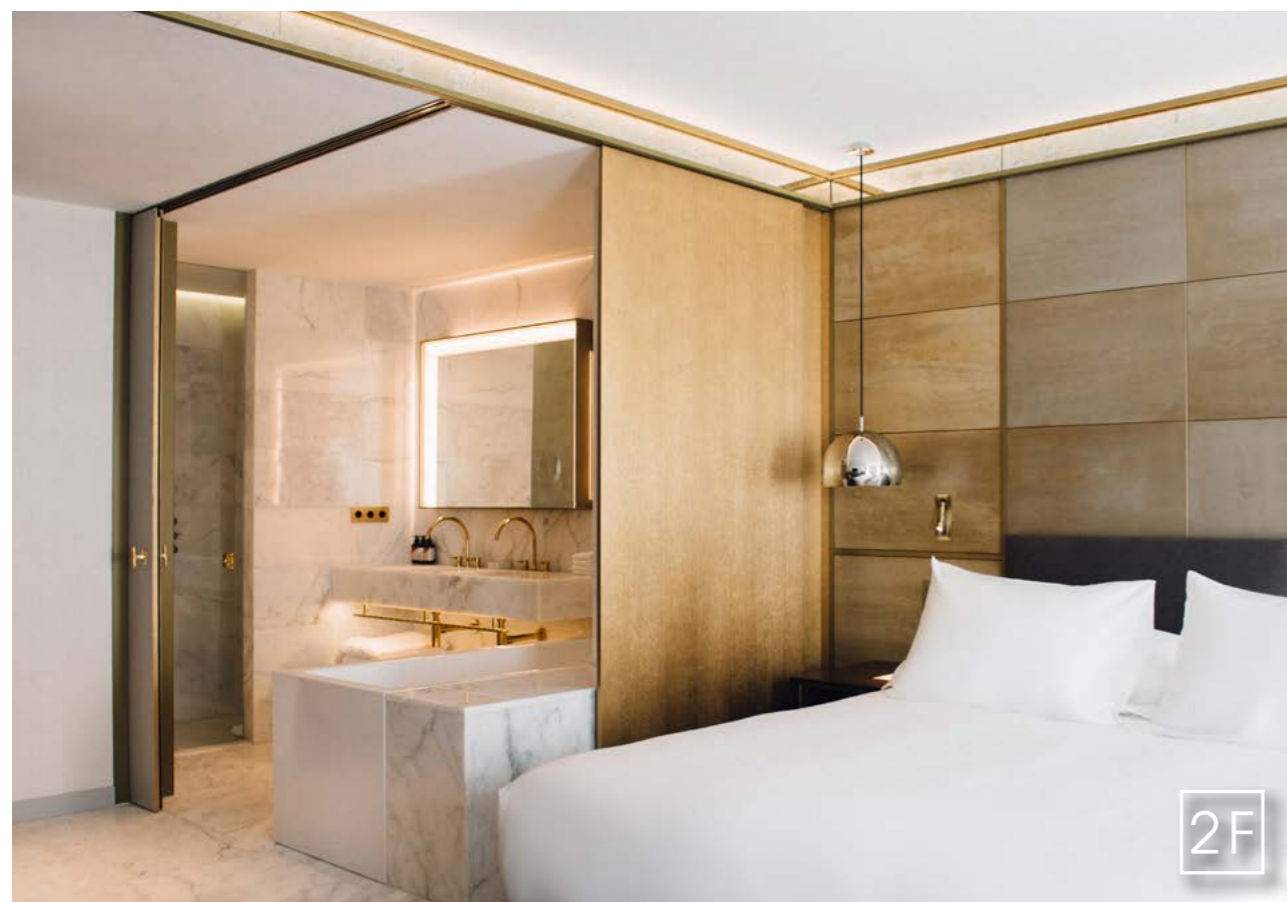
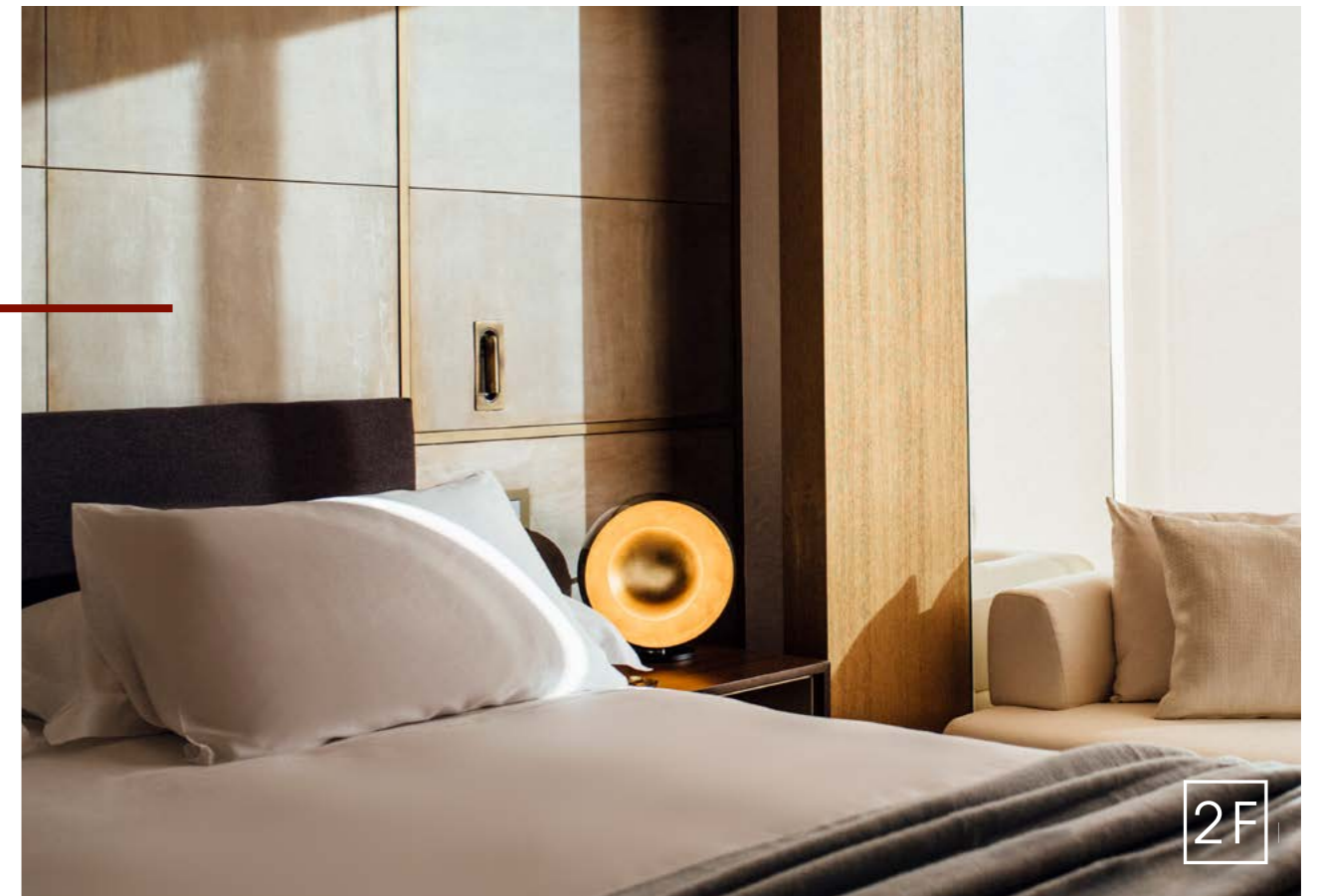


ALMANAC

BARCELONA • SPANIEN

HOSPITALITY

The 5-star boutique hotel Almanac Barcelona with its elegant ambiance and relaxed atmosphere is surrounded by Barcelona's finest attractions. The luxuriously appointed 80 rooms were designed by CC245 Arquitectos, and the Haselbacher family operates the hotel with great success. Opened in 2018 with a contract volume of € 700.000.



NATURHOTEL FORSTHOFGUT

LEOGANG • ÖSTERREICH



NATURHOTEL FORSTHOFGUT

LEOGANG • ÖSTERREICH

HOSPITALITY

The Forsthofgut is inseparably linked to the region and nature. The Family Schmuck has been running the hotel for the fifth generation and the house has been located in Leogang for 400 years. We had the opportunity to illuminate the latest expansion of rooms and restaurant areas. With a contract volume of € 140,000, the project was successfully completed in 2021.



DELPHIN

SEETAL • SCHWEIZ



DELPHIN

SEETAL • SCHWEIZ

HOSPITALITY

The Hotel Delphin is located directly on Lake Hallwil in the Seetal region. The Fischer family has passionately run the hotel for many years, processing their homegrown fish in the kitchen. 2F had the privilege of supplying lighting worth 70.000 CHF.



ZUM OXN

LAUFEN • DEUTSCHLAND

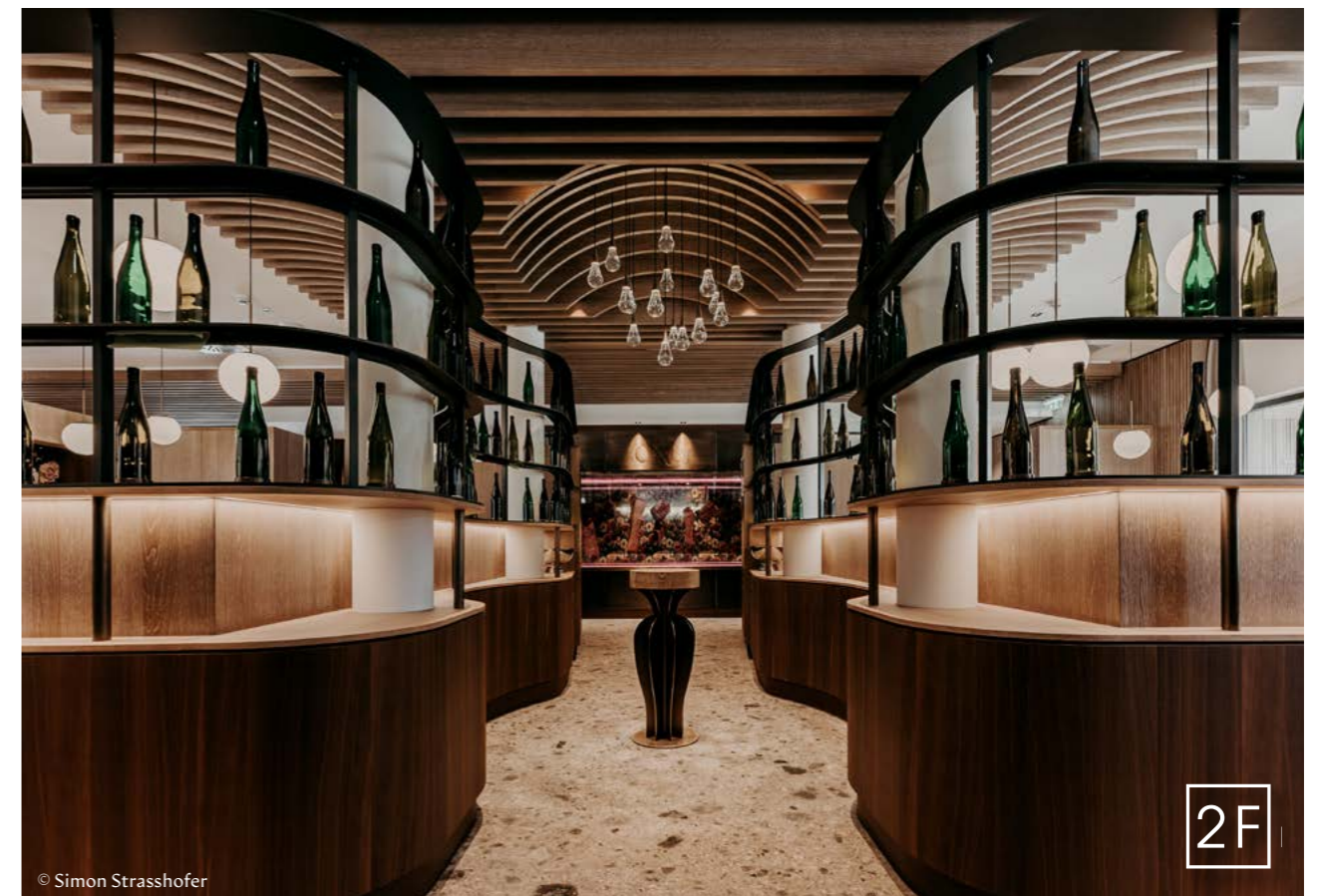


ZUM OXN

LAUFEN • DEUTSCHLAND

HOSPITALITY

The hotel & restaurant zumOXN is located in the city of Laufen, surrounded by stunning mountains and lakes, near the city of Salzburg. The charming rooms and inviting public area were illuminated with the best light by 2F. The contract volume amounted to €50,000.



SUURSTOFFI

RISCH • SCHWEIZ

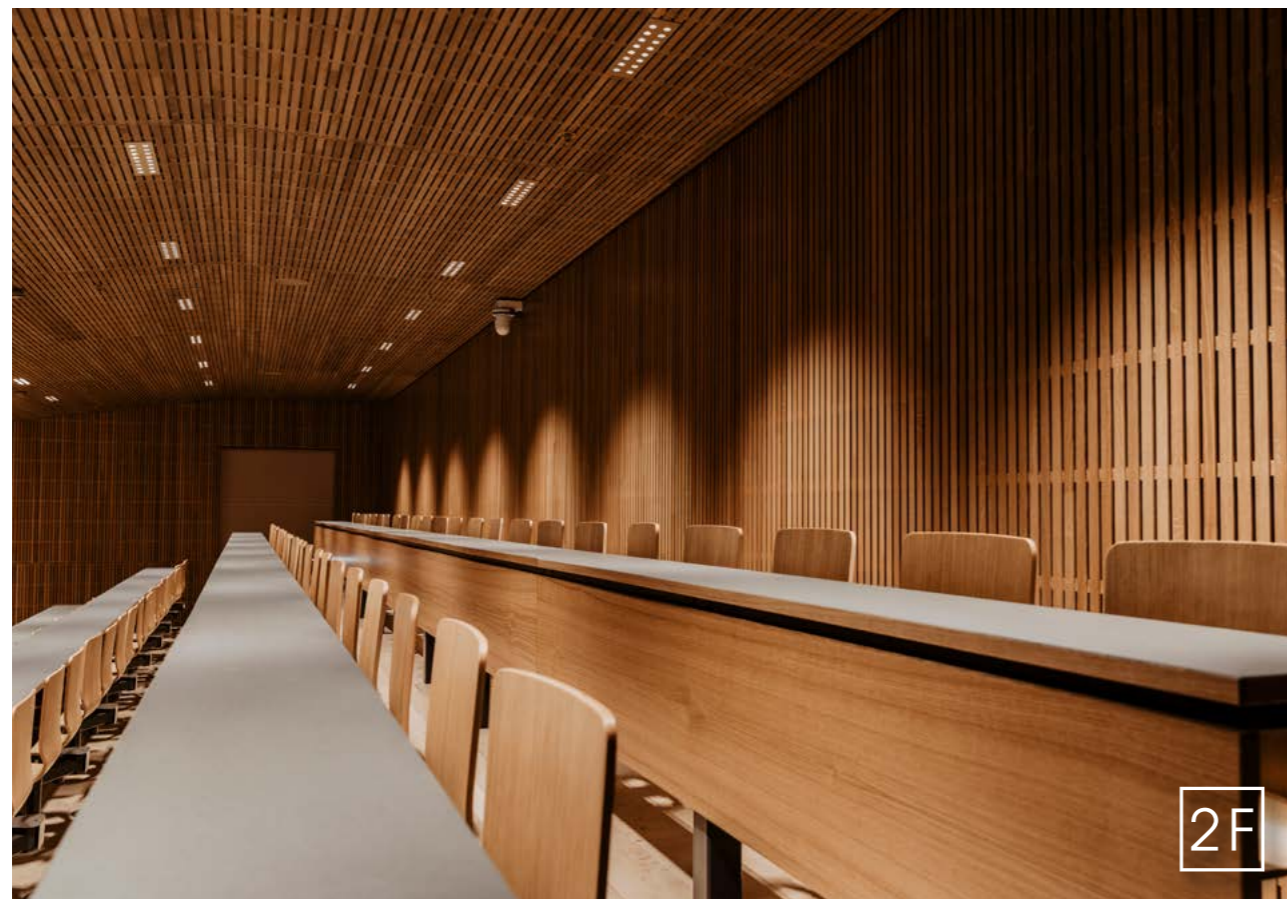
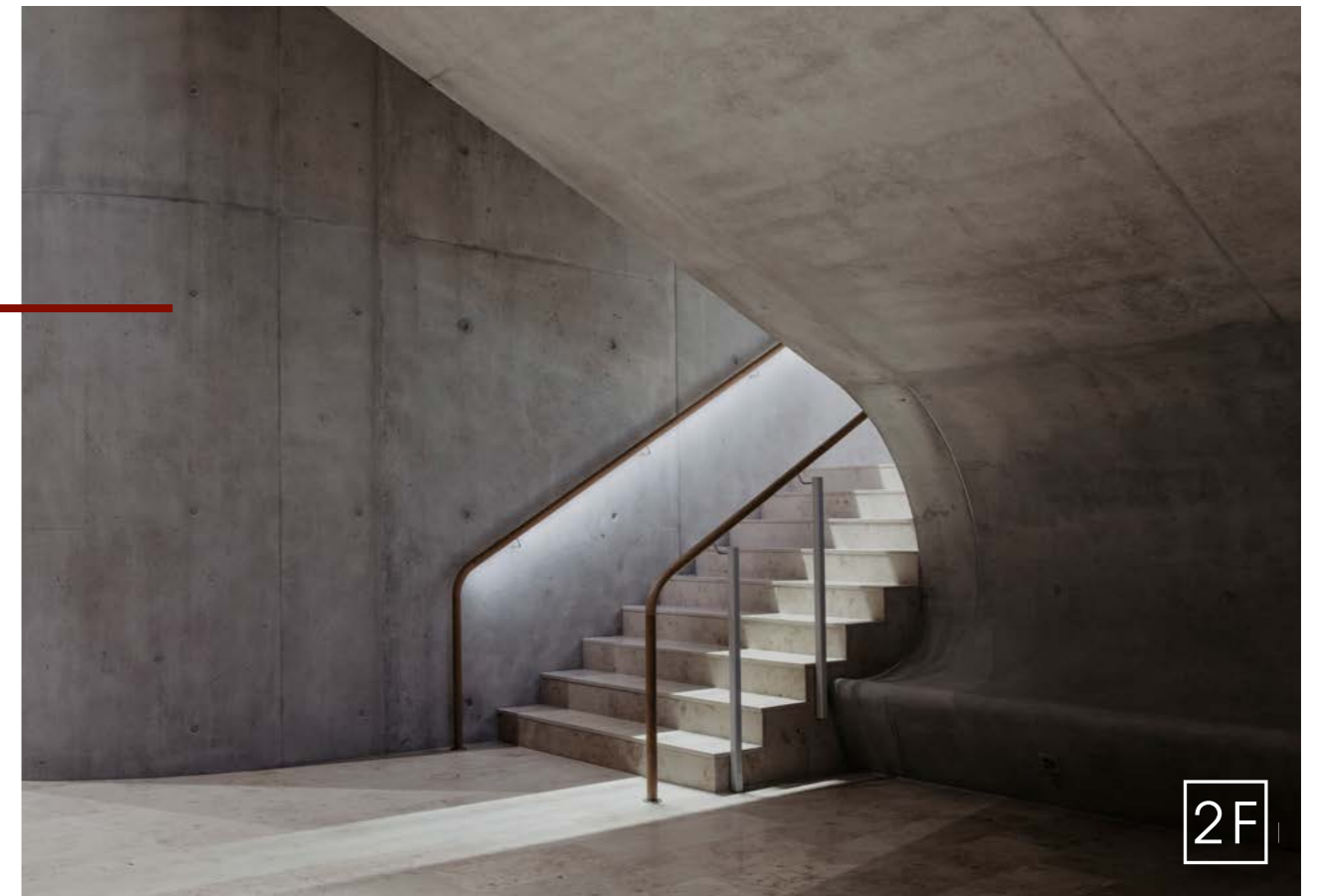


SUURSTOFFI

RISCH • SCHWEIZ

OFFICE

The Suurstoffi accommodates both a residential area and the Lucerne University of Applied Sciences and Arts. In this projects, 2F had the opportunity to provide both decorative and technical lighting. Especially in the lecture halls, there were high demands on the lighting, as it was necessary to emphasize the architectural wood paneling and ensure the correct lighting intensity for the students. The lighting design was carried out by Bartenbach in Aldrans. The contract volume amounted to 1,8 million CHF, and the project was implemented in 2020.



GLARNER REGIONALBANK

GLAN • SCHWEIZ

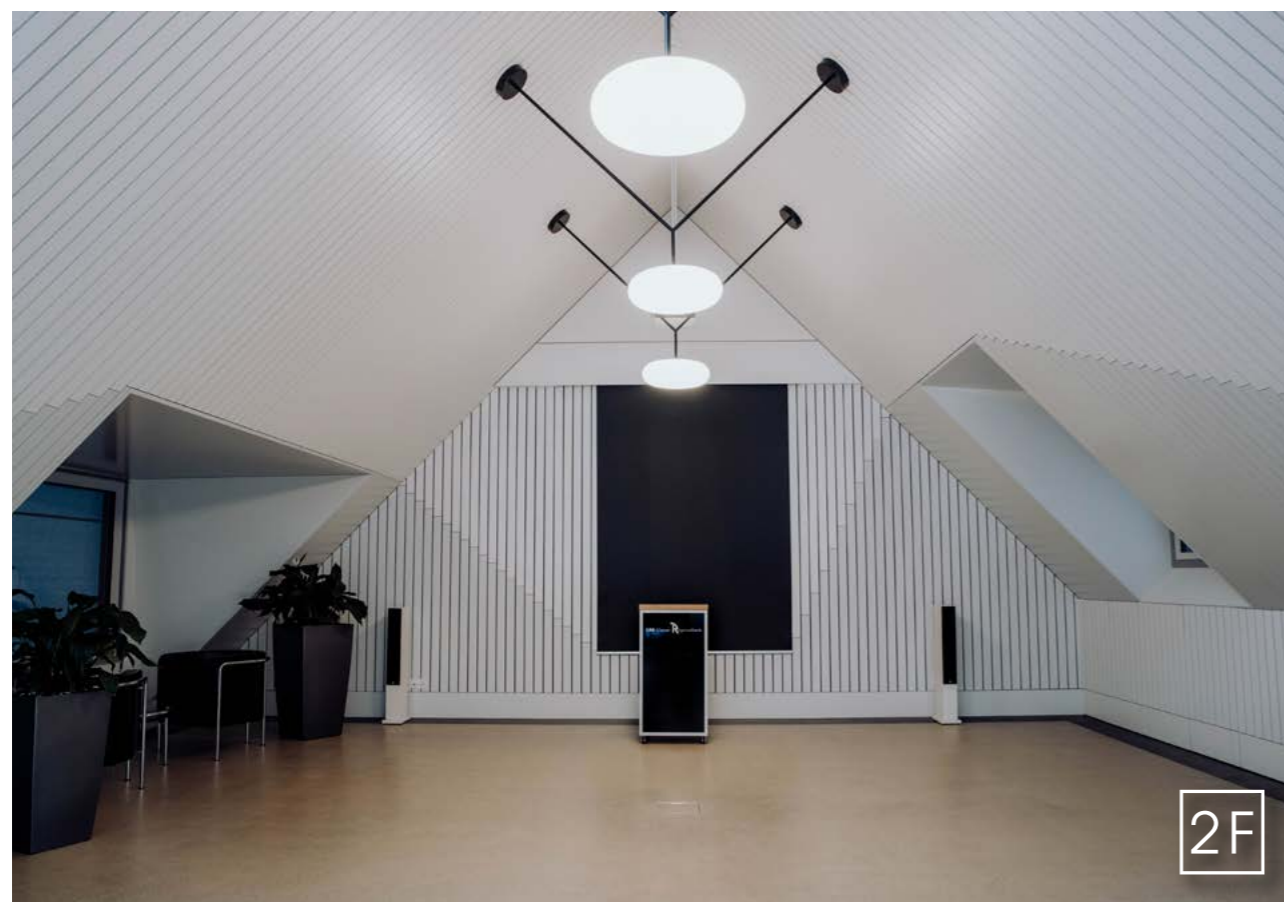


GLARNER REGIONALBANK

GLAN • SCHWEIZ

OFFICE

In 2020, 2F manufactured and installed several custom light fixtures for the Glarner Regional Bank. Planning and execution were completely undertaken by 2F. A particularly challenging aspect was the production of oversized light panels and the installation of glass fixtures into the sloping roof. The contract volume amounted to 70.000 CHF.



LANDESBANK

VADUZ • LIECHTENSTEIN

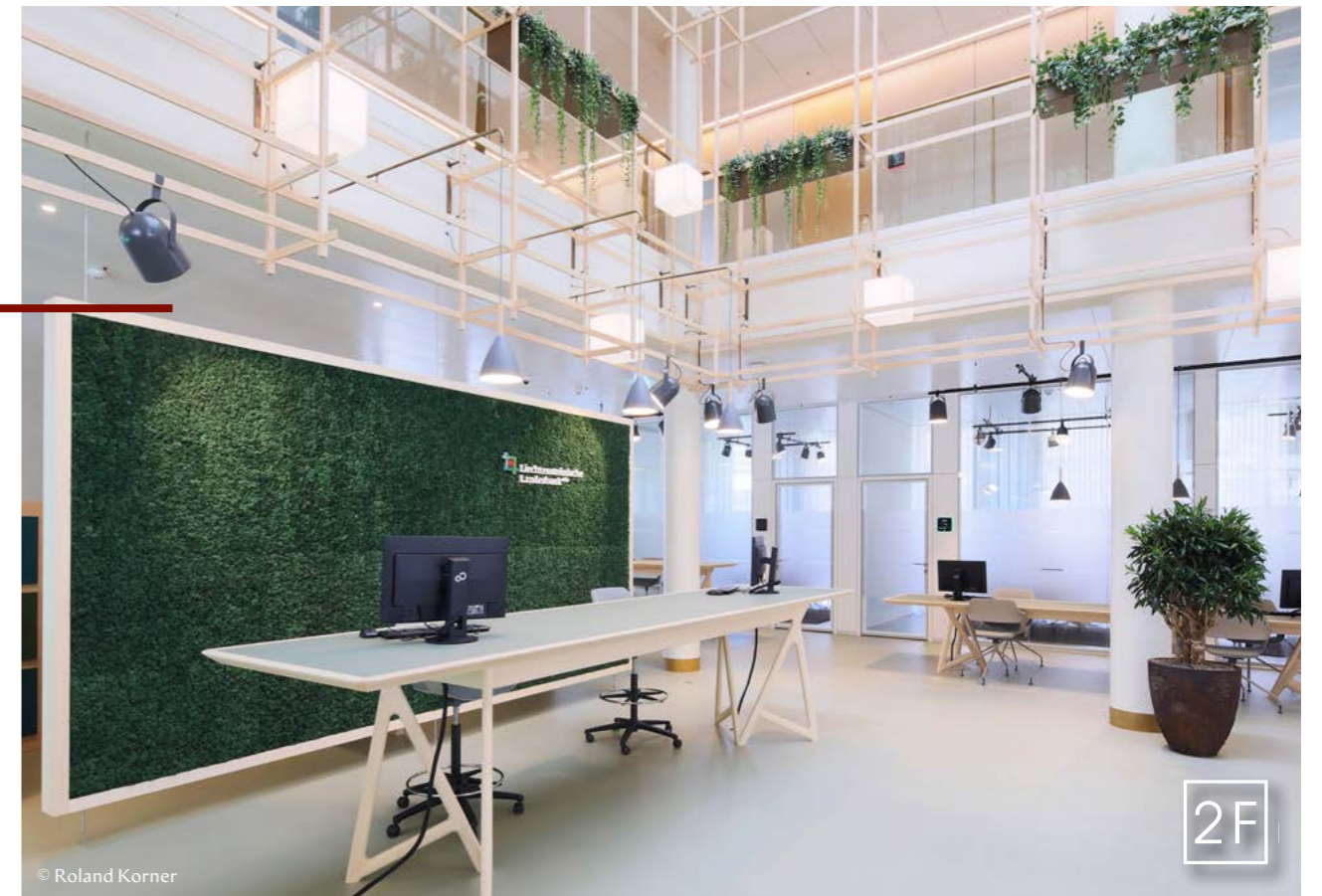


LANDESBANK

VADUZ • LIECHTENSTEIN

OFFICE

The Liechtenstein State Bank was a project that combined both technical and aesthetic requirements in the heart of Liechtenstein in 2021. The lighting design was carried out by the company Spektrum in Vaduz. The contract volume amounted to CHF 70.000.



ARULA CHALET

OBERLECH • ÖSTERREICH

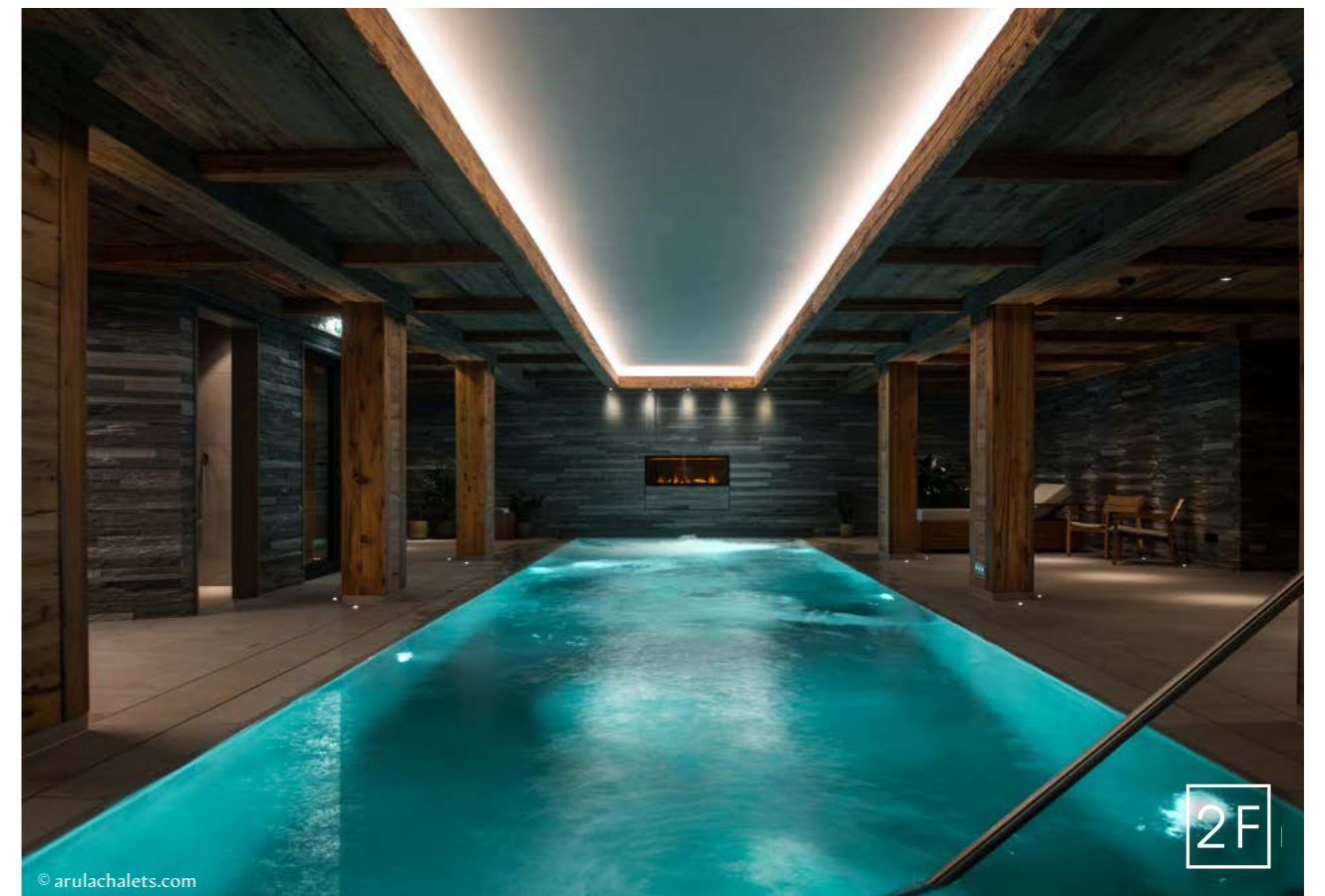
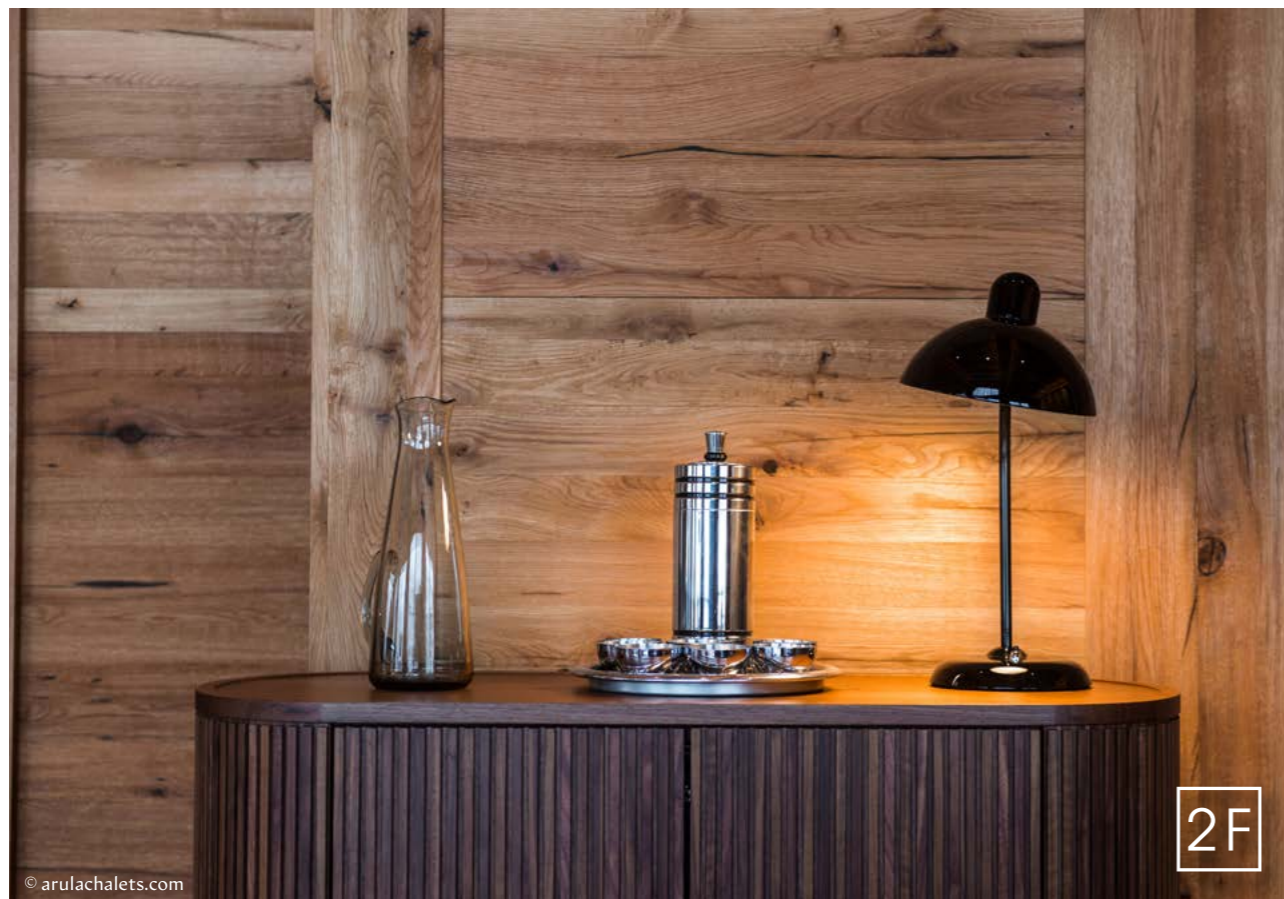


ARULA CHALET

OBERLECH • ÖSTERREICH

RESIDENTIAL

The project Arula Chalet is a private residence of an English owner in the mountains of Vorarlberg. All lamps were custom-made, the planning was done by Sibille Schaschl, and the lighting design was carried out by Lichtkompetenz Zürich. 2F was not only responsible for the production of the lights but also for their professional installation. The order volume amounted to approximately € 300.000 in 2019.



7 HEAVEN

ZERMATT • SCHWEIZ

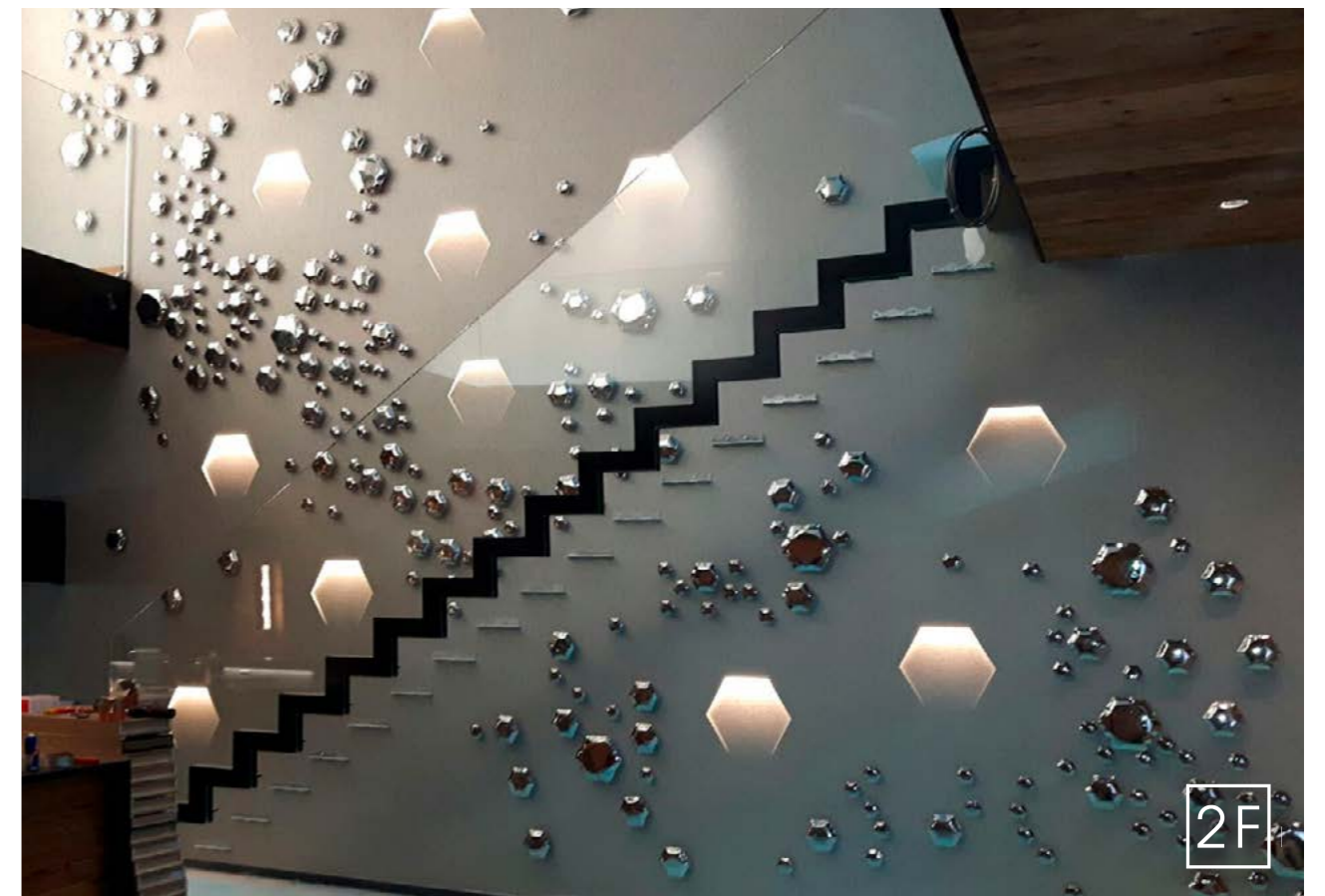


7 HEAVEN

ZERMATT • SCHWEIZ

RESIDENTIAL

7 Heaven was built by an English private investor in the center of Zermatt, Switzerland. The lighting design was handled by Lichtkompetenz Zürich. The notable feature of this project was a specially crafted light fixture with a diameter of 4 meters, intricately laser-cut and also installed by 2F. The project was implemented in 2016 and had a contract volume of € 350.000.





HANS BUCHEGGER

general manager
+43 676 842744 201
hans.buchegger@2f-leuchten.com



PASCAL STUTZ

sales director
Switzerland
+41 79 609 04 52
pascal.stutz@2f-leuchten.com



HERMANN BAUMANN

CEO 2F Leuchten WLL Bahrain
Bahrain
+973 37045664
hermann.baumann@2f-leuchten.com



MICHAEL ASTEINER

technical development manager
+43 676 842744 209
michael.asteiner@2f-leuchten.com



MILENA AREZINA

area sales manager
International
+43 676 842744 305
milena.arezina@2f-leuchten.com



PETER VANHEES

area sales manager
Benelux, France
+32 498 571 248
peter.vanhees@2f-leuchten.com



LISA STRASSEGGER

area sales manager
Portugal
+351 910 581 282
lisa.strassegger@2f-leuchten.com



CLEMENS BRANDSTÄTTER

area sales manager
Austria, Germany, Switzerland
+43 676 842744 303
clemens.brandstaetter@2f-leuchten.com



SIMON SOMMER

area sales manager
Switzerland
+41 79 901 34 83
simon.sommer@2f-leuchten.com



MARTIN BAUMANN

area sales manager
Germany
+49 151 2917 6891
martin.baumann@2f-leuchten.com



MICHAEL FORSTER

area sales manager
France
+43 676 8427 44 300
michael.forster@2f-leuchten.com



DANIEL FALKNER

area sales manager
Vienna, Upper Austria, Lower Austria
+43 676 842744 302
daniel.falkner@2f-leuchten.com



SIGI HAUNSPERGER

area sales manager
Salzburg
+43 676 842744 301
sigi.haunsperger@2f-leuchten.com



GEORG KRONREIF

area sales manager
Styria, Carinthia, Tyrol, Vorarlberg
+43 676 842744 304
georg.kronreif@2f-leuchten.com



GÜNTER LIENBACHER

lighting consultant, back office
Austria
+43 6243 2407 354
guenter.lienbacher@2f-leuchten.com

2F



2F-LEUCHTEN Ges.m.b.H. A-5441 Abtenau, Pichl 118, Österreich
+43-6243-2407 | office@2f-leuchten.com | www.2f-leuchten.com

2F-LEUCHTEN GmbH | Industriestrasse 17a | CH-6203 Sempach Station, Schweiz
+41 41 260 72 71 | schweiz@2f-leuchten.com | www.2f-leuchten.com

2F-LEUCHTEN WLL | No. 806, Building 286, Road 1704, Complex 317 | 6204 Bahrain
+973 37045664 | hermann.baumann@2f-leuchten.com | www.2f-leuchten.com